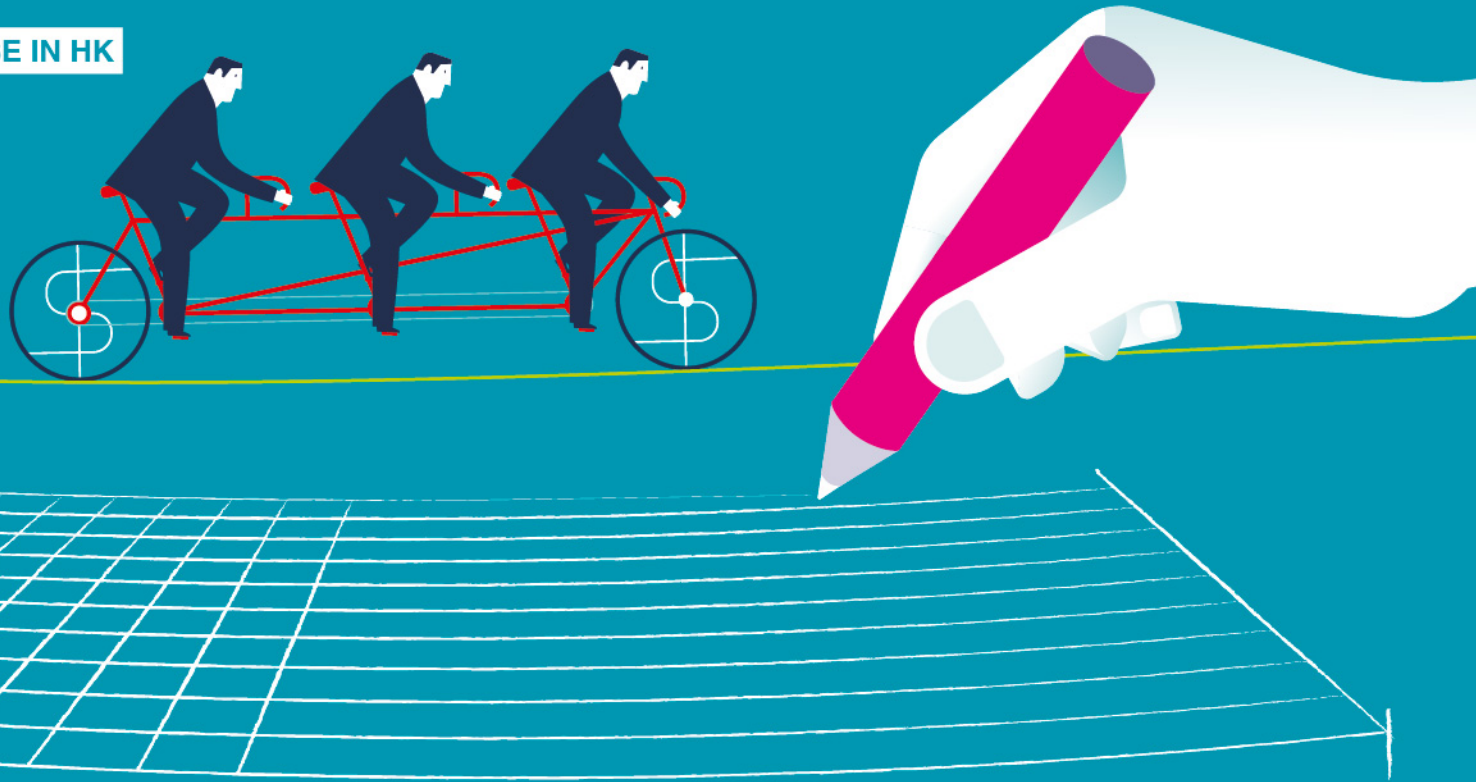


CORPORATE GOVERNANCE VS FINANCIAL COMPETITIVENESS

A SCENARIO OF SOCIAL ENTERPRISE IN HK



According to a research by the Department of Accountancy of City University of Hong Kong in Oct 2018, Social Enterprise (SE) can improve financial competitiveness by setting up Advisory Committee. At the captioned seminar, SEBC invited the lead professors of the research and the solicitors of Davis Polk & Wardwell to present the research findings and to share some practical advice on drafting the terms of reference of the committee respectively. There will be a case sharing by Comfort Me, a SE has set up their advisory committee recently.



22 January 2019 (Tuesday)



6 pm – 8 pm (registration begins at 5:45 pm)



**23/F, Hysan Place, 500 Hennessy Road,
Causeway Bay, Hong Kong**

Target

Social Enterprise Practitioners and Social Angel
(Priority will be given to Social Angel and representative of projects supported by Impact Incubator)

Class size

50

Language

English (Supplemented by Cantonese)

Fee

Free admission

RSVP

Ms. Janie Chan

☎ 2876 2491 ✉ janie.chan@hkcss.org.hk

SPEAKERS



Prof. Mo Lai Lan Phyllis

Professor,
The Department of Accountancy,
City University of Hong Kong



Dr. Sidney C M Leung

Associate Professor,
The Department of Accountancy,
City University of Hong Kong



Mr. Howard Ling, MH

Chief Consultant,
Social Enterprise Business Centre



Ms. Noble Mak,

Associate,
Davis Polk & Wardwell

Please register online on or before 16 Jan (Wed).



<https://event.hkcss.org.hk/registration.aspx?lang=zh&ID=EventID0001283>

Successful registrants will receive a confirmation email by 18 Jan.

Funded by

Organized by

Co-organized by

